

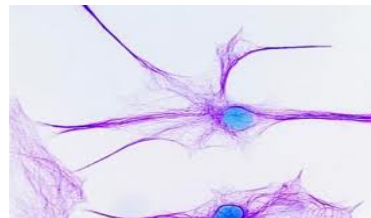
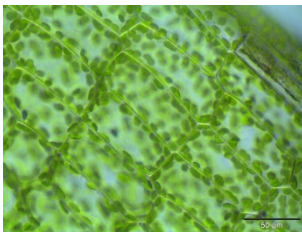
## Biology A-Level Project – Cellular Structure and function.

Cells are the basic units of all living organisms. Advances in microscopy such as the development of the electron microscope have allowed Biologists to observe cells in more detail. At GCSE level animal and plant cells are relatively simple structures that you should be able to recognise.

As an introduction into the first unit of Advanced level Biology you must:

- Produce a poster of a plant and animal cell with A level detail
- The poster must be labelled with all the major parts and include a description of their function.
- Cellular structures to be included:

nucleus, nucleolus, nuclear envelope, rough and smooth endoplasmic reticulum (ER), Golgi apparatus, ribosomes, mitochondria, lysosomes, chloroplasts, plasma (cell surface) membrane, centrioles, flagella and cilia



You must be able to talk about the structure of your cells and the functions of the parts.

Good luck and welcome to A level Biology at JCG